

**HS-GL01**



**Product Features**

- > Digital keypad glass door lock for glass door
- > Android standard USB interface (4-6V)
- > Fingerprint Capacity 200pcs
- > Card capacity 50 groups of IC card
- > Fingerprint + Password + Card + Remote Controller



**GLASS DOOR LOCK**



Automatic clutch design



Protection Program



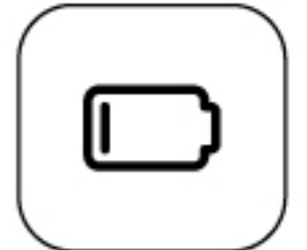
Emergency rechargeable



Automatically Locked



Voice Prompt



Low Battery Warning



Fingerprint Lock



Avoid Opening



Double lock tongue



Ring the doorbell



False secret alarm



Fore and aft zinc alloy

Unlocking method	Fingerprint, Password, IC card, Remote Control + Mobile Phone App (optional)
Material	Zinc Alloy
Power supply	4 pcs AA dry battery
Lifetime of battery	10000 Times to Unlock, 15 months as Standby.
Working temperature	- 20C Upto +55C
Door thickness requirement	10-12mm
Emergency power supply interface	Android Standard USB interface (4-6V)
Applications	Push Pull, Frame, Frameless Glass door, Double Glass door, Single Glass door can be installed.
Features	Automatic Clutch Design, Double Lock Tongue, Bring the doorbell, Automatically locked, Avoid Opening installation
Storage capacity	Fingerprint capacity: 200pcs; Password Capacity: 30 groups, each Group Support 6-12 sets Password; Card capacity: 50 Groups of IC card



## THREE COLOR FOR YOUR CHOICE



**Black**

**Silver**

**Gold**



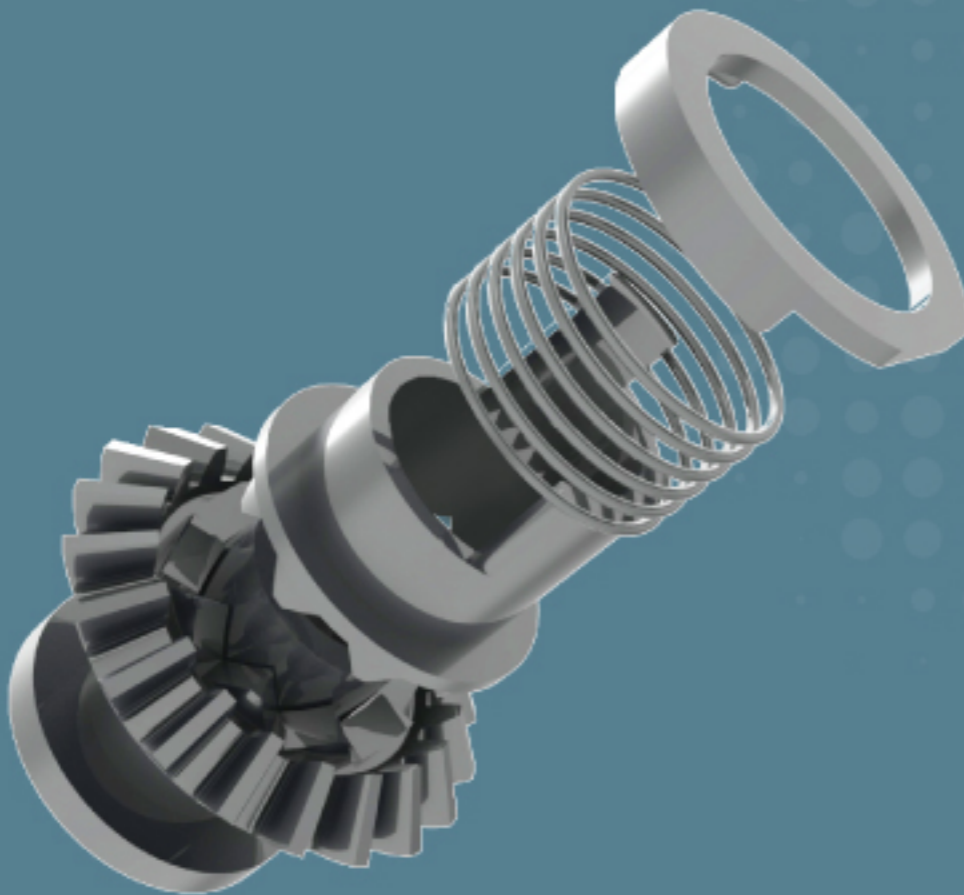
## FINGERPRINT SMART LOCK



## REMOTE UNLOCK VIA APP



**CLUTCH PROTECTION DESIGN**  
Even if the lock tongue hindered,  
motor is still running, doesn't  
damage the motor



**SEMICONDUCTOR  
BIOMETRIC FINGERPRINT  
SENSOR TO IDENTIFY RAPIDLY  
WITH 0.5 SECONDS**





## PASSWORD UNLOCK

## RFID UNLOCK

## SMART CARD ACCESS KEY



## REMOTE UNLOCK

